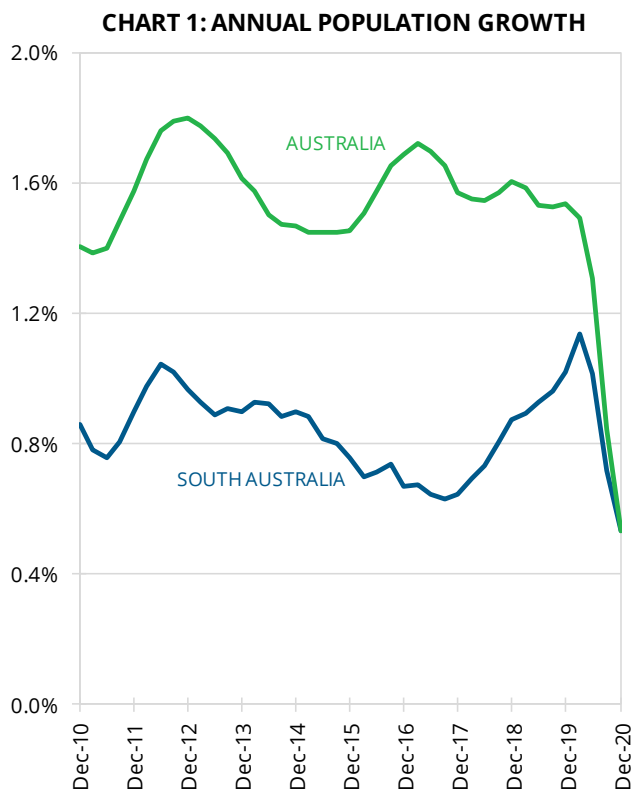


SUMMARY

- During the year to December 2020, South Australia's Estimated Resident Population (ERP) increased 0.5% (or 9,400 persons) to 1,770,790 people.
- Nationally, the ERP increased 0.5% to 25,694,393 people.

FURTHER ANALYSIS

South Australia's population rose marginally by 300 persons during the December quarter 2020, to be 0.5% higher than a year ago. This reflects a quarterly change in natural increase (up 1,320), net interstate migration (up 130) and net overseas migration (down 1,150). Nationally, population rose by 6,900 people in the December quarter and was 0.5% higher than a year earlier—see Chart 1.



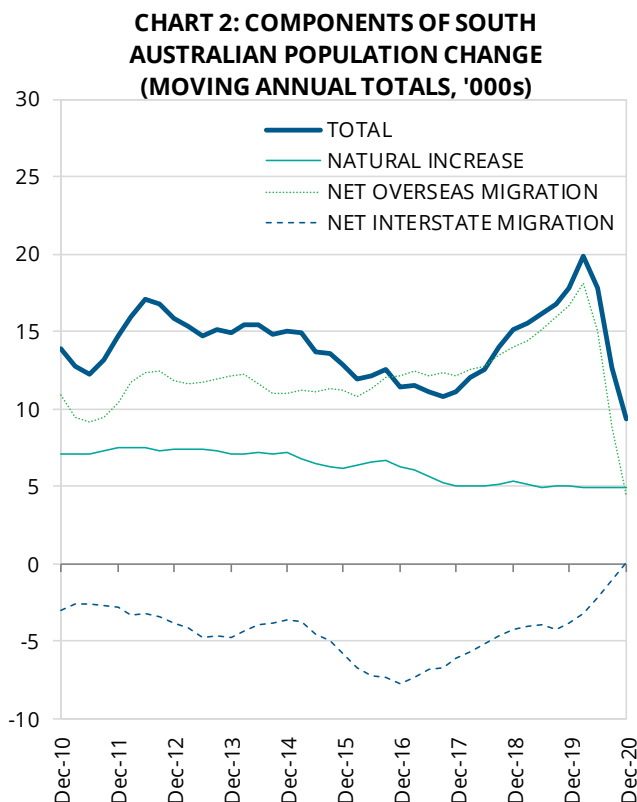
Population growth over the year by jurisdiction, from highest to lowest was: Queensland (1.1%), Western Australia (0.9%), the ACT (0.8%), Tasmania (0.6%), South Australia and the Northern Territory (both 0.5%), New South Wales (0.4%) and Victoria (0.0%) – see Table 1.

TABLE 1: Estimated Resident Population

	Dec 20 ('000)	Dec 20 vs Dec 19 ('000)	Dec 20 vs Dec 19 %
NSW	8,172.5	35.6	0.4
VIC	6,661.7	0.7	0.0
QLD	5,194.9	58.1	1.1
SA	1,770.8	9.4	0.5
WA	2,670.2	24.5	0.9
TAS	541.5	3.2	0.6
NT	246.6	1.3	0.5
ACT	431.5	3.2	0.8
AUS*	25,694.4	136.3	0.5

*Includes Christmas Island, the Cocos Islands and Jervis Bay.

In the 12 months to December 2020 the largest contribution to South Australia's population growth came from natural increase, which totalled 4,900, down 2.5% from the previous 12 months. Net overseas migration over the period totalled 4,400 persons, down 73% from the previous 12 months. In the year to December 2020, there was a net interstate inflow of 100 people to South Australia, compared with a net outflow of 3,860 in 2019—see Chart 2.



Next release of [this ABS data](#) (formerly cat. no. 3101.0) is 16 September 2021