

## SUMMARY

In the 12 months to January 2021:

- South Australia's overseas goods exports totalled \$11.5 billion, up 2.7% (\$302 million) on the previous twelve months ([moving annual total](#), in original terms).
- Nationally, the value of overseas goods exports totalled \$366.7 billion, down 5.6% (\$21.9 billion) over the same period.
- South Australia accounted for 3.1% of national overseas goods exports.
- Increases in the value of overseas goods exports were recorded in Western Australia (up 5.5%), South Australia (up 2.7%) and Tasmania (up 0.8%), while falls were recorded in Victoria (down 11%), New South Wales (down 12%), the Northern Territory (down 14%) and Queensland (down 25%). See Chart 1.

## MAJOR EXPORT DESTINATIONS

Major South Australian export markets that experienced growth in the year to January 2021 compared with the year to January 2020 included:

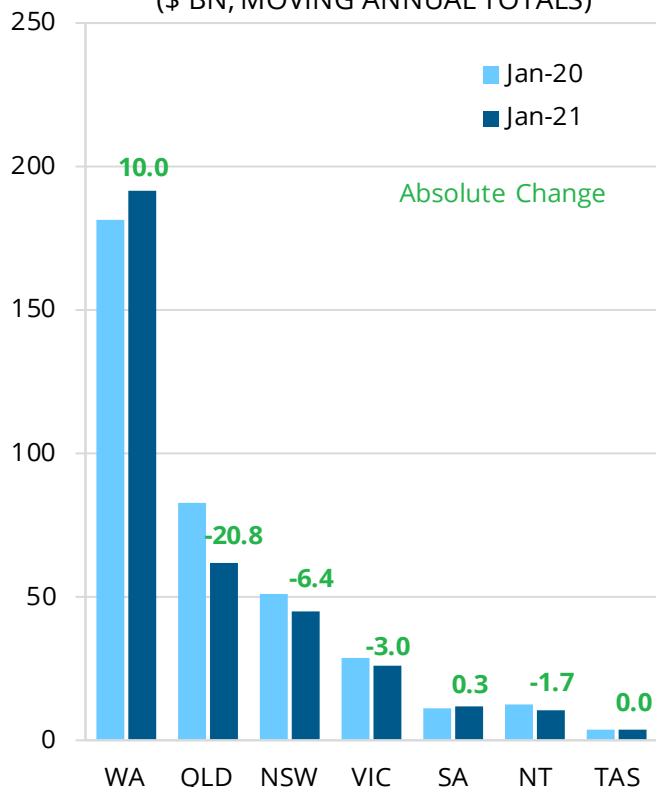
- China (up \$449 million or 15%);
- Indonesia (up \$138 million or 69%);
- Philippines (up \$134 million or 110%);
- Thailand (up \$131 million or 42%); and
- Saudi Arabia (up \$111 million or 205%).

Major South Australian export markets that experienced a decline in the year to January 2021 included:

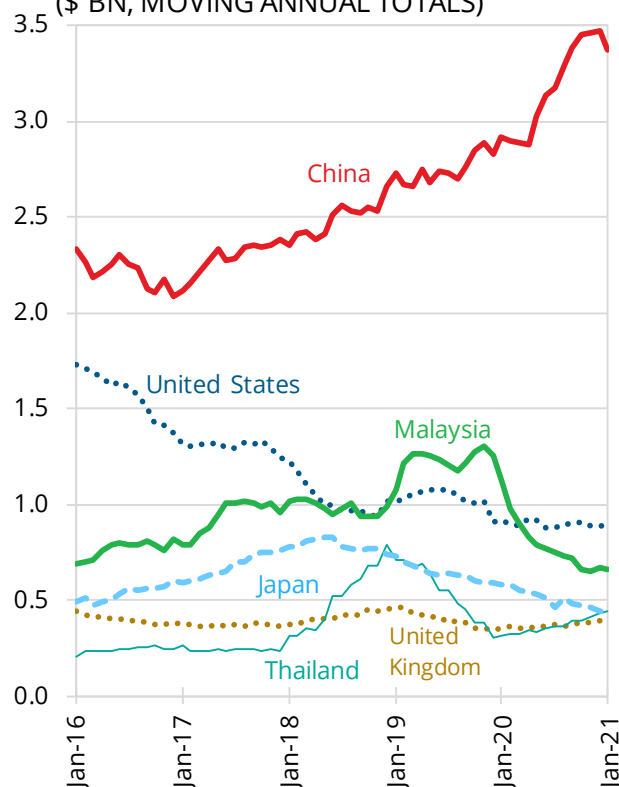
- Malaysia (down \$475 million or 42%);
- Japan (down \$138 million or 24%);
- Belgium (down \$110 million or 74%);
- South Korea (down \$109 million or 33%); and
- France (down \$83 million or 57%).

See Table 1 and Chart 2.

**CHART 1: OVERSEAS GOODS EXPORTS**  
(\$ BN, MOVING ANNUAL TOTALS)



**CHART 2: SA OVERSEAS GOODS EXPORTS**  
(\$ BN, MOVING ANNUAL TOTALS)



## MAJOR EXPORT COMMODITIES

In South Australia, export commodities recording growth in the year to January 2021 compared with the year to January 2020 included:

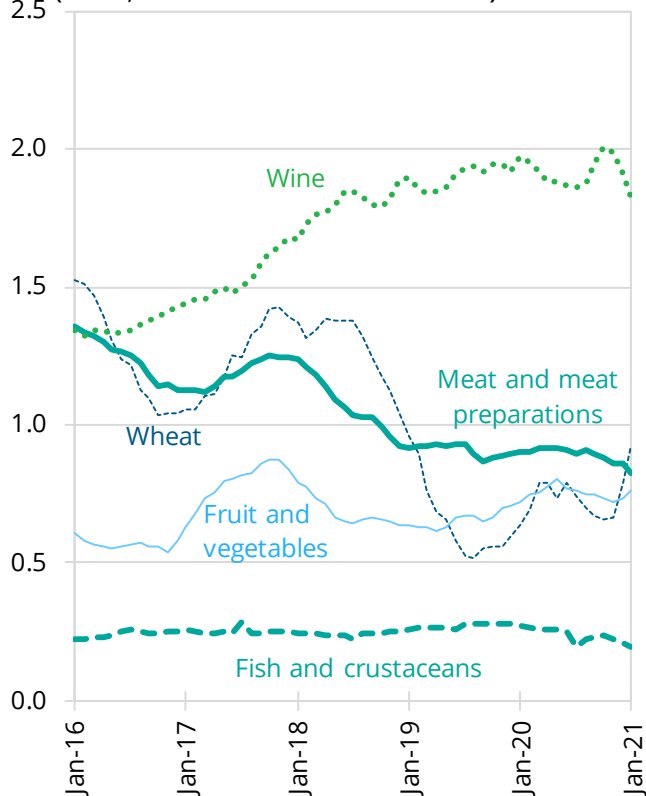
- Iron ore and concentrates (up \$334 million or 69%);
- Wheat (up \$290 million or 46%);
- Barley (up \$191 million or 223%);
- Lead (up \$61 million or 25%); and
- Fruit and vegetables (up \$40 million or 5.5%).

During the same period, South Australian exports that recorded a decline in value included:

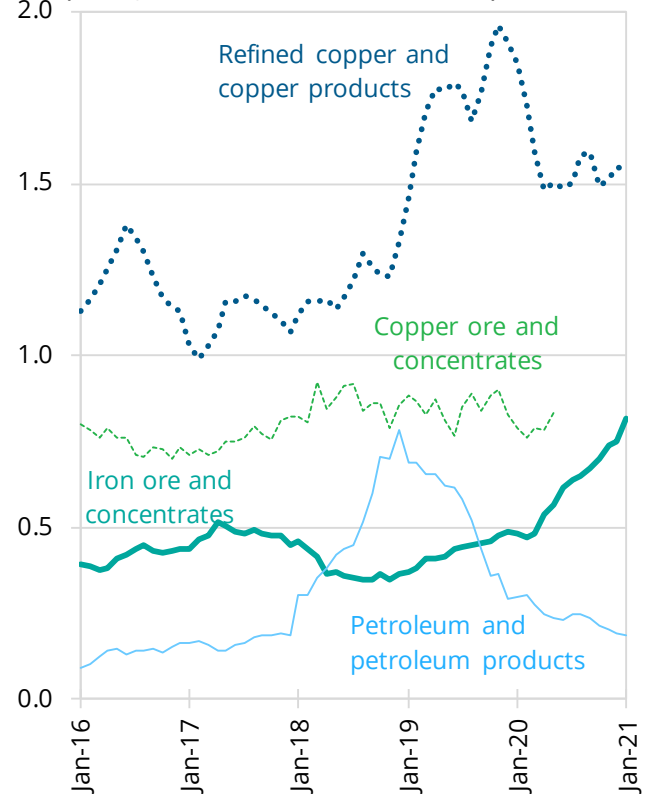
- Refined copper and copper products (down \$308 million or 17%);
- Wine (down \$144 million or 7.3%);
- Petroleum and petroleum products (down \$112 million or 37%);
- Wool and sheepskins (down \$85 million or 43%); and
- Meat and meat preparations (down \$82 million or 9.1%).

See Table 2 and Charts 3 and 4.

**CHART 3: SA OVERSEAS GOODS EXPORTS**  
(\$ BN, MOVING ANNUAL TOTALS)



**CHART 4: SA OVERSEAS GOODS EXPORTS**  
(\$ BN, MOVING ANNUAL TOTALS)



**Notes:** Monthly estimates of merchandise exports are generally volatile and are unadjusted for seasonal factors—consequently monthly data should be treated with caution. Figures in this brief are reported in moving annual total terms to remove the impact of seasonality.

All data is in original nominal terms, hence both quantity and price changes contribute to changes in values.

Next release of this [ABS data](#) (formerly cat. no. 5368.0) is 1 April 2021

**Table 1: South Australian Overseas Exports by Country**

|                  | 12 months to<br>January 2021 (\$m) | Change from<br>previous year (%) | Share of total<br>exports (%) |
|------------------|------------------------------------|----------------------------------|-------------------------------|
| United States    | 892.2                              | -2.6                             | 7.7                           |
| Canada           | 612.0                              | 5.5                              | 5.3                           |
| Middle East      | 538.0                              | 46.7                             | 4.7                           |
| United Kingdom   | 383.0                              | 9.9                              | 3.3                           |
| European Union   | 625.8                              | -5.4                             | 5.4                           |
| France           | 62.9                               | -56.9                            | 0.5                           |
| India            | 583.0                              | 21.7                             | 5.1                           |
| New Zealand      | 442.7                              | 5.6                              | 3.8                           |
| Total East Asia* | 6,896.1                            | 1.0                              | 59.8                          |
| Japan            | 440.1                              | -23.9                            | 3.8                           |
| China            | 3,371.9                            | 15.4                             | 29.2                          |
| Hong Kong        | 235.9                              | 1.7                              | 2.0                           |
| ASEAN#           | 2,325.0                            | -4.7                             | 20.2                          |
| Malaysia         | 659.2                              | -41.9                            | 5.7                           |
| Thailand         | 444.6                              | 41.6                             | 3.9                           |
| Other            | 559.6                              | -11.1                            | 4.9                           |
| <b>Total^</b>    | <b>11,532.4</b>                    | <b>2.7</b>                       | <b>100.0</b>                  |

\*Japan, China, Hong Kong, ASEAN, and 5 other Asian countries.

# Brunei, Indonesia, Laos, Malaysia, Myanmar, Philippines, Singapore, Thailand, Vietnam and Cambodia.

^ Total may not add due to rounding

**Table 2: South Australian Overseas Exports by Commodity**

|                                      | 12 months to<br>January 2021 (\$m) | Change from<br>previous year (%) | Share of total<br>exports (%) |
|--------------------------------------|------------------------------------|----------------------------------|-------------------------------|
| Live Animals                         | 8.3                                | 29.7                             | 0.1                           |
| Meat & Meat Preparations             | 824.0                              | -9.1                             | 7.1                           |
| Wheat                                | 927.1                              | 45.6                             | 8.0                           |
| Barley                               | 276.2                              | 222.6                            | 2.4                           |
| Fish and Fish Crustaceans            | 194.2                              | -29.0                            | 1.7                           |
| Fruit and Vegetables                 | 762.8                              | 5.5                              | 6.6                           |
| Wine                                 | 1,828.1                            | -7.3                             | 15.9                          |
| Wool and Sheepskins                  | 113.8                              | -42.8                            | 1.0                           |
| Oil Seeds and Oleaginous Fruits      | 155.2                              | 22.4                             | 1.3                           |
| Crude Minerals excluding Fuels       | 32.5                               | 162.8                            | 0.3                           |
| Metal Ores and Metal Scrap           | na                                 | na                               | na                            |
| Copper Ore and Concentrates*         | na                                 | na                               | na                            |
| Iron Ore and Concentrates            | 814.8                              | 69.5                             | 7.1                           |
| Petroleum and Petroleum products     | 186.5                              | -37.4                            | 1.6                           |
| Total, Metals and Metal Manufactures | 1,928.1                            | -13.0                            | 16.7                          |
| Iron and Steel                       | 39.7                               | -47.9                            | 0.3                           |
| Refined Copper and Copper Products   | 1,544.1                            | -16.6                            | 13.4                          |
| Lead                                 | 307.5                              | 24.8                             | 2.7                           |
| Other Metals                         | 1.0                                | -6.4                             | 0.0                           |
| Metal manufactures                   | 35.8                               | -10.9                            | 0.3                           |
| Machinery                            | 306.9                              | -11.5                            | 2.7                           |
| Road Vehicles, Parts & Accessories   | 41.4                               | -18.2                            | 0.4                           |
| Other/Confidential*                  | 2,431.7                            | 25.1                             | 21.1                          |
| <b>Total^</b>                        | <b>11,532.4</b>                    | <b>2.7</b>                       | <b>100.0</b>                  |

\* Other/Confidential includes copper ore and concentrates from June 2020 and uranium oxide.

^ Total may not add due to rounding